

הגמיר 64 טקסו ירד 7-401
 64 טקסו ירד 7-401
 64 טקסו ירד 7-401

$$\frac{40 \cdot x - 64}{70} \quad x - \frac{64 \cdot 100}{40} \quad x = 160$$

הגמיר 64 טקסו ירד 7-401
 64 טקסו ירד 7-401
 64 טקסו ירד 7-401

3 חזקו 3 חזקו 3 חזקו
 3 חזקו 3 חזקו 3 חזקו

1600 = 480
 1600 = 480
 1600 = 480

$$1600 = 480$$

1600 = 480
 1600 = 480
 1600 = 480

1600 = 480
 1600 = 480
 1600 = 480

1600 = 480
 1600 = 480
 1600 = 480

$$1600 - 64 = 96$$

1600 = 480
 1600 = 480
 1600 = 480

$$2 \cdot 96 = 192$$

192 + 480 = 672
 192 + 480 = 672
 192 + 480 = 672

$$192 + 480 = 672$$

② ④ 200 500 1000 500 1000 500 1000

④ $900 - 800 = 100$ 100 500 1000 500 1000 500 1000

④ ① $25, 45, 70$ 100 500 1000 500 1000 500 1000

④ $55 - 65$ 1000 500 1000 500 1000 500 1000

③ $\frac{1000}{92-65} - \frac{1000}{25} = 45$ 1000 500 1000 500 1000 500 1000

$$\textcircled{3} \quad a_2 = 4 \qquad a_4 = 10$$

$$a_n = a_1 + (n-1)d$$

$$a_2 = a_1 + (2-1)d \Rightarrow 4 = a_1 + d$$

$$a_4 = a_1 + (4-1)d \Rightarrow 10 = a_1 + 3d$$

$$\begin{array}{l} 4 = a_1 + d \\ - \\ 10 = a_1 + 3d \end{array}$$

$$-6 = -2d \quad | : -2 \quad \boxed{d=3}$$

$$\textcircled{4} \quad 4 = a_1 + 3 \quad \boxed{a_1 = 1}$$

$$\textcircled{5} \quad S_n = \frac{n}{2} [2a_1 + (n-1)d]$$

$$S_{19} = \frac{19}{2} [2 \cdot 1 + (19-1) \cdot 3]$$

$$S_{19} = 9.5 (2 + 54)$$

$$S_{19} = 9.5 \cdot 56$$

$$\boxed{S_{19} = 532}$$

Ⓢ $y = 3x - 3$

$y = 2x + 2$

Ⓣ $\begin{cases} y = 3x - 3 \\ y = 2x + 2 \end{cases}$

$0 = x - 5$

$x = 5$

$y = 3 \cdot 5 - 3$

$y = 15 - 3$

$y = 12$

$M(5, 12)$

Ⓠ $y = -3x + 15$ $y = -3 \cdot 5 + 15$ $y = -15 + 15$ $y = 0$

$M(5, 12)$ $O(0, 0)$

Ⓡ $M(5, 12)$

$O(0, 0)$

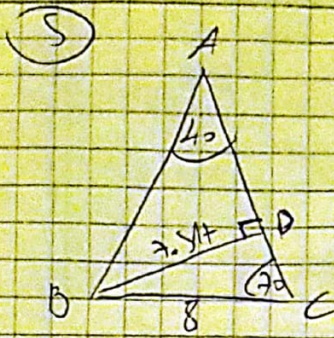
$d = \sqrt{(x_2 - x_1)^2 + (y_2 - y_1)^2}$

$d_{MO} = \sqrt{(0 - 5)^2 + (0 - 12)^2}$

$d_{MO} = \sqrt{25 + 144}$

$d_{MO} = \sqrt{169}$

$d_{MO} = 13$



(1) $\sin 70 = \frac{BD}{8}$ $BD = 8 \cdot \sin 70$ $\therefore BD = 7.517$

(2) $BD^2 + DC^2 = BC^2$ $7.517^2 + DC^2 = 8^2$
 $56.51 + DC^2 = 64$ $DC^2 = 7.48$ $DC = \sqrt{7.48}$
 $DC = 2.73$

$\angle A + \angle C + \angle B = 180$
 $\angle A + 70 + 70 = 180$
 $\angle A = 40$

$\tan 40 = \frac{7.517}{AD}$ $AD = \frac{7.517}{\tan 40}$

$AD = 8.958$

$AC = AD + DC$ $AC = 8.958 + 2.73$

$AC = 11.68$

(3) $S_{\triangle ABC} = \frac{AC \cdot BD}{2}$

$S_{\triangle ABC} = \frac{11.68 \cdot 7.517}{2} = 43.93$

$$(6) \quad 8+7+6+5+4 = 40$$

אם יש לנו 40 ו' ו-10

$$(7) \quad \bar{x} = \frac{5 \cdot 8 + 6 \cdot 7 + 7 \cdot 6 + 8 \cdot 5 + 9 \cdot 4 + 10 \cdot 4}{40}$$

$$\bar{x} = \frac{294}{40} = 7.35$$

$$(8) \quad \frac{x_{20} + x_{21}}{2} = \frac{7+7}{2} = 7 \quad \text{אם למדנו 7}$$

(9) אם יש לנו 9 ו' ו-10 ו' ו-11 ו' ו-12 ו' ו-13 ו' ו-14 ו'
אם יש לנו 15 ו' ו-16 ו' ו-17 ו' ו-18 ו' ו-19 ו' ו-20 ו'

$$(10) \quad p = \frac{6+7+8}{40} = \frac{21}{40} = 0.525$$

$$(11) \quad p = \frac{8}{40} = \frac{1}{5} = 0.2$$